



Technical Rider The Theatre Lab

Agam Theatre Lab, 39 Keppel Rd, #02-01D
Tanjong Pagar Distripark, Singapore 089065

STAGING

Seating Configurations & Audience Capacity

Agam Theatre Lab offers multiple flexible seating arrangements to suit diverse staging styles. Our default configuration is end-stage. Seating layouts and capacity charts are available in PDF format upon request.

Floor	High performance vinyl flooring overlaid on concrete floor; finished with black matt paint		
Performance Area	Depth	Upstage drape to clearance line (1m) from audience seating	9.35m (98 seats)
			8.35m (110 seats)
		Upstage drape to retractable seats (folded position)	Approx 14.80m
	Width	SR drape to SL drape	8.00m

GRID AND RIGGING

Grid	Fixed 48mm O/D pipe grid	
	Nominal height from stage floor to bottom of pipe	Approx 4.85m
	Quantity of pipes on grid	11
	Distance between pipes	1.50m
	Maximum capacity per pipe	100 KG (UDL)
Draperies	Black drape surround on fixed traveller tracks	

Miscellaneous accessories

Music stand	x 7
Mic Stand (short)	x 4
Mic Stand (long)	x 8
Single tier keyboard stand	x 1

Dressing Rooms

All dressing rooms at Agam Theatre Lab are outfitted with makeup stations and mirrors. Toilet facilities are available along the nearby corridor for performers and crew.

- **Back of House:** 1 dressing room, accommodating 6 persons

Green Room

No food and drinks are allowed within the performance space. A shared walkway outside the venue (Facing Keppel road) at the back of the House is available for performers, crew, and Agam personnel. On the 1st floor, vending machines are available. If the performance requires consumption of food or drinks, please consult Venue Technical Production

HEALTH AND SAFETY

All works carried out must comply with the Workplace Safety and Health (WSH) Act. It is compulsory for the Hiring company to conduct their own Risk Assessments with respect to their specific onstage activities, a copy of must be submitted to the Venue Technical Production at least 1 month prior to bump in. Personal Protective Equipment (PPE) should be worn at all times during technical setup and strike i.e., Safety Shoes.

All cloth sceneries hung are required to be fire retarded and a copy of the certification to be submitted to Venue Technical Production.

STAGE EFFECTS (PYRO/ FIRE/ SMOKING/ WEAPONS/ CONFETTI)

Venue MUST be informed 1.5 months before show date (during the production call) or at the earliest opportunity that the hirer intends to use special effects. The full details along with risk assessments must be supplied: - Letter of No Objection must be obtained from the venue prior to application of SPF Permit. - Layout of Safety Radius (Pyro/Fire). - License to operate from the Contractor or Vendor.

The act of smoking is prohibited by Law in Singapore.

Weapons that cannot be bought off the shelf i.e., replicas, requires police permit.

Use of confetti is subjected to Venue approval. There will be additional charges for cleaning if confetti is used.

Glitter is NOT allowed on stage.

DAMAGED STAGE PREMISES/ EQUIPMENT/ PAINTING OF STAGE

Hirer will not make changes to the existing stage floors/walls without prior approvals from Venue Production. *Stage restoration to its original state shall be borne by hiring company.

Any painting on stage requires a protective covering on stage floors or any venue equipment and prior approval from the Venue..

Certain type of tapes is not allowed on stage. Hirer is to inform venue of the type of tapes intended for use, subjected to approval by Venue Technical Production.

No tapes are allowed to be used on Venue soft goods.

Repairs for any damages to stage or venue equipment caused by hirer or contractors hired by the hiring company will be charged to hiring company accordingly.

LIGHTING

Venue Specifications

Agam Theatre Lab's technical setup may be updated periodically due to ongoing enhancements and design modifications. As such, hirers are advised to refer to the latest technical documents prior to their production. Please note that specifications are subject to change without advance notice. All technical requirements should be verified for each individual show.

Electrical Compliance & Safety

Any external electrical equipment brought into Agam Theatre Lab must comply with local electrical safety standards, and must be of sound quality and condition. If any equipment appears faulty or non-compliant, Agam reserves the right to conduct safety tests and may disallow its use to maintain a safe working environment. Power connections, to isolators, are subject to inspection by a Licensed Electrical Worker (LEW) and the hirer must provide ELCB + overload protection.

Power supply	220-240v single phase 50hz
Standard Stage output and power outlet	13A UK Type
UpStage Back wal	1 x 16A CEEFORM

Equipment Setup & Operation

All in-house equipment - including lighting consoles, effects systems, and projection units - will be set up and operated by only Agam's Technical Team. Under special circumstances, and only with prior consultation, exceptions may be made. Touring equipment must be installed under the supervision of the touring team, but may be operated by either party if mutually agreed upon.

Console	Grand MA2
Data Distribution	DMX Binary 234 MK2 Cable (DMX 512)

A basic standard rig exists. Any change is subject to prior agreement and charges for restoration will incur. Please peruse the standard rig plan which consists of:

Fresnel	200W LED RGB Single Source Fresnel	12
Parcan	200W RGB 4 cell Zoomable Par	9
Profile	200W RGB 4 Profile 19 deg	17
Moving Lights	400W BSW Mover	10

Please note that there are no spare lights fixtures other than the above.

Visual Media Equipment

Agam Theatre Lab is a fully equipped Black Box venue featuring a Panasonic PT-DX100UW 10,000-Lumen XGA DLP projector and a motorised projection screen (16:9 format, 4.88m by 2.7m). This system is included as part of the venue's default infrastructure and supports a variety of multimedia needs. Projection requirements should be coordinated with our technical team as part of your overall show planning. Usage of the projector is chargeable.

Surtitles and QR Code Display

For surtitling, Agam Theatre Lab provides two in-built TV screens positioned for optimal audience visibility. These screens are connected via HDMI output from the control room. This system offers a flexible and reliable solution for surtitles or other auxiliary content. Please discuss your surtitling needs with us in advance so we can ensure compatibility with your show's format and run. TVs are chargeable.

Planning Your Media Setup

To ensure seamless integration of visual media into your production, we encourage hirers to engage with our technical team early in the planning process. If video playback or projection is required, please provide a Video Line Drawing of your intended setup. This allows our team to assess feasibility and offer the most effective solutions.

Personal Protective Equipment (PPE)

Agam Theatre Lab is committed to maintaining a safe working environment for all crew members, hirers, and visitors. To support this, we strongly advise the use of appropriate Personal Protective Equipment (PPE) during all set-up and strike periods. Safety is a shared responsibility, and we appreciate your cooperation in following these guidelines.

Foot Protection

Open-toed footwear, including sandals, is strictly prohibited during set-up and strike operations. All personnel present in the venue during these times are encouraged to wear covered, preferably steel-toe safety shoes to minimise risk of injury.

Head Protection

Whenever overhead work is being carried out - such as rigging, focusing, or other elevated tasks - all individuals in the venue must wear hard hats. Agam Theatre Lab is equipped with a **Mantall XE60 Mini lift** to facilitate safe access to elevated positions. Use of this equipment constitutes "work at heights" and must comply with local safety regulations. Only trained and properly licensed personnel are permitted to operate the lift. If your production requires work at height, please inform the Agam Technical Team in advance to ensure appropriate access and safety protocols are in place.

SOUND

Agam Theatre Lab features a range of permanently installed technical systems, tailored to the unique layout of the venue and designed to support frequently requested production needs. While these systems are configured for efficiency and flexibility, hirers must still provide a detailed list of technical requirements for each production - even if they pertain to the default equipment listed in this document.

Mixing Board	Allen & Heath SQ6
Playback (Audio recorder)	Zoom H1 XLR recorder (<i>check availability</i>)

Speaker

Speaker Rig (Front Half Audience)	2 x box pro Achat 104 A
Speaker Rig (Back Half Front Audience)	2 x box pro Achat 104 A
Speaker Rig (Behind Audience)	2 x box pro Achat 104 A
Monitor for Stage on Rig	2 x box pro Achat 104 A
Subwoofer	1 x 2x box pro Achat 112 Sub

Dynamic Microphones

Shure SM 57	4
Shure SM 58	4

Condenser

Behringer BC1500 Drum kit	1 (7 Piece per set)
Behringer C-2 Matched Pair Studio	1

Wireless Handheld Microphone	2
-------------------------------------	---

DI Box

Behringer Ultra-G GI100 (Mono)	6
ART dADB Dual Active (Stereo)	2
Radial StageBug SB-5 (PC)	1

In-Ear monitoring system (IEM)

TUGA RW-2080 In-Ear Monitors (Transmitters)	8
TUGA RW-2080 Receivers	8
TUGA RW-2080 Earpiece	8

Wireless Microphone System : 2 Sets FOC, Additional are chargeable.

Intercom : Saramonic WiTalk-WT5S Full-Duplex Wireless Intercom System (1.9 GHz) (*check availability*)

CHARGEABLE EQUIPMENT AND SERVICES

1. Lavalier Microphones :

2 sets FOC, Additional **\$40 per body pack per day / \$250 per body pack per week**

Sennheiser XSW1-ME2 Body Pack Transmitters	5
Sennheiser MKE2 (Skin Tone) (3.5mm type)	10
Sennheiser MKE2 (Black) (3.5mm type)	4
Sennheiser Headworn (Black) (3.5mm type)	4
Debra Audio AU400 Pro	4
Erzhen Body Pack Transmitters	7
Shure MKE2 (Skin Tone) (3-pin type)	6

2. Consumables

Batteries Energizer 72 per pack : **\$55/pack**

Gaffer Tapes (48mm) : **\$30/roll**

Gaffer Tapes (24mm) : **\$20/roll**

3. Projector : **\$100/min 4 hours / \$300 per day / \$1,800 per week**

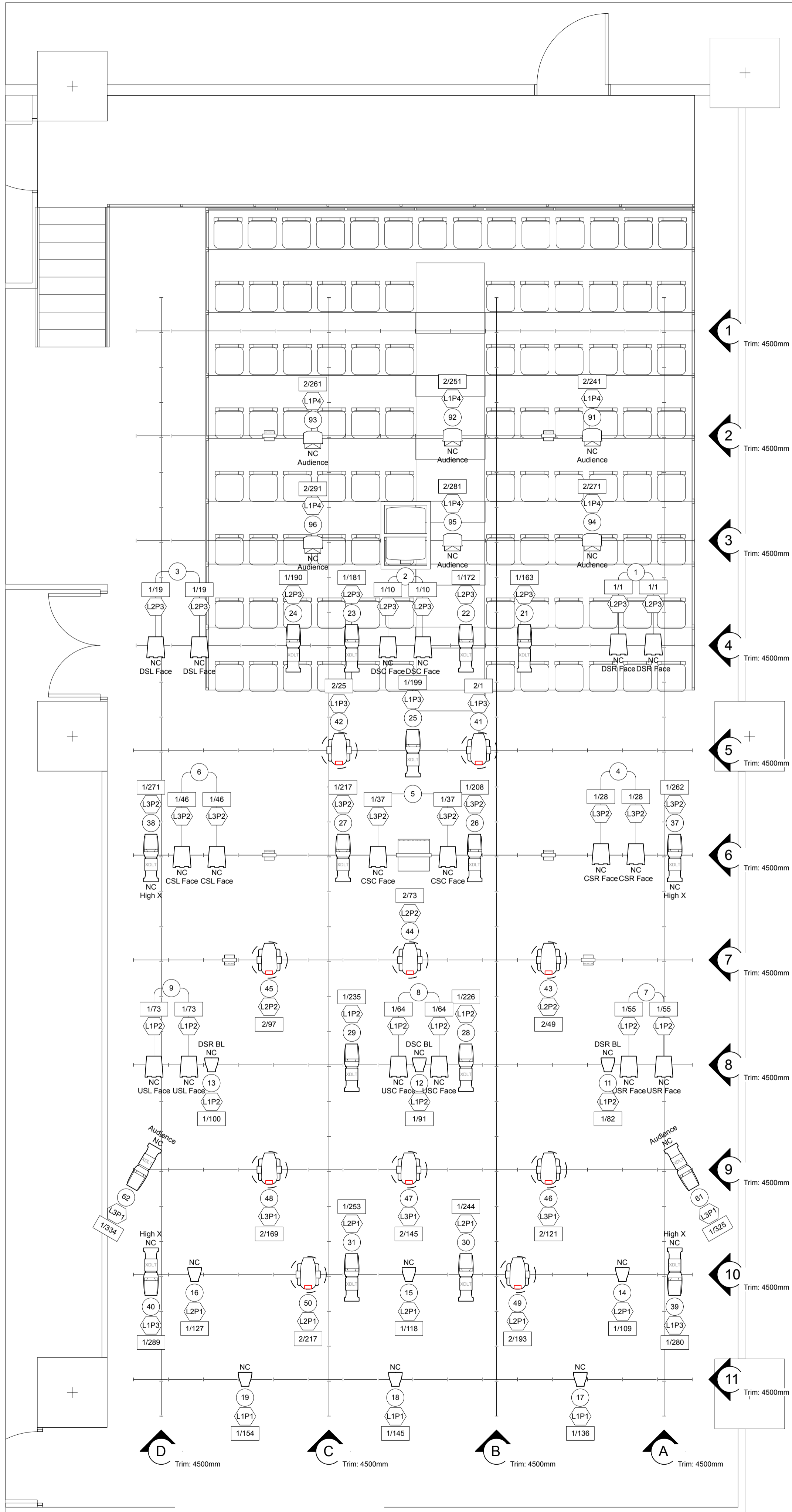
Panasonic PT-DX100UW 10,000-Lumen XGA DLP Projector

4. 2 x TVs for Subtitle/display : **\$100 per day / \$600 per week**

PRISM+ Q65 Ultra - 2 TVs connected to one HDMI input (Laptop by Hirer)

5. Haze Machine : **\$50 per day / \$300 per week**

6. Smoke Machine : **\$50 per day / \$300 per week**

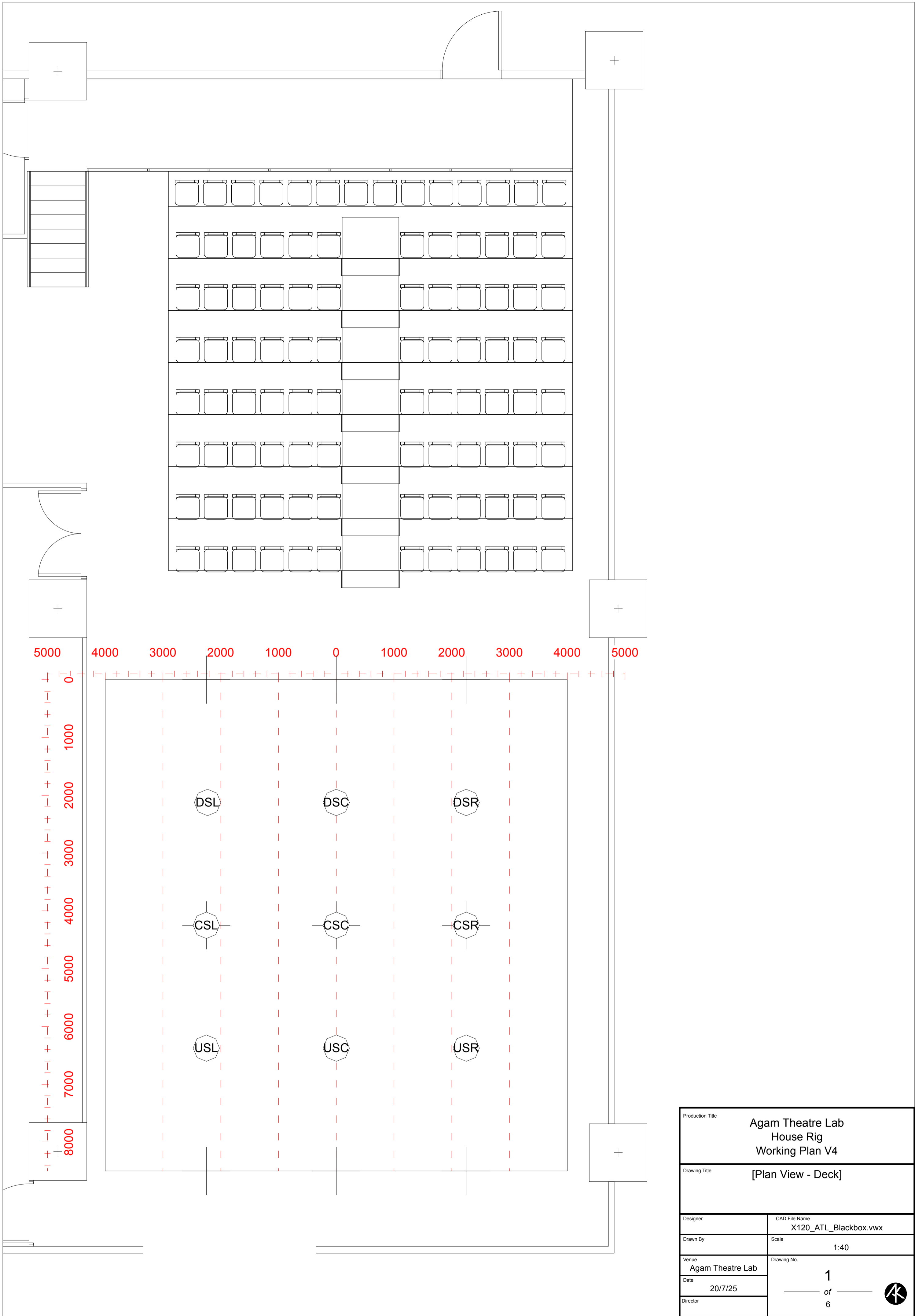


Symbol Key

	LED RGB Single Cell Fresnel	18
	LED RGB 4 Cell Zoomable PAR	9
	LED RGB 4 Profile 19 Deg	17
	RGBAW Wedding PAR	6
	480W BSW Mover	10
	Panasonic Projector	1
	Box Pro Achat 104 A	6
	Box Pro Achat 112 Sub	1

Production Title		Agam Theatre Lab House Rig Working Plan V4	
Drawing Title		[Plan View - Grid]	
Designer	CAD File Name	X120_ATL_Blackbox.vwx	
Drawn By	Scale	1:40	
Venue	Drawing No.	2	
Date		of	
Director		6	





Production Title		Agam Theatre Lab House Rig Working Plan V4	
Drawing Title		[Plan View - Deck]	
Designer	CAD File Name	X120_ATL_Blackbox.vwx	
Drawn By	Scale	1:40	
Venue	Drawing No.	1	
Date		20/7/25	
Director		1 of 6	

